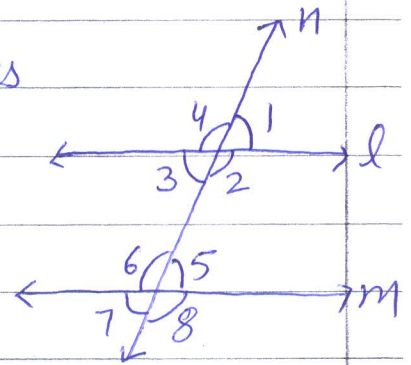
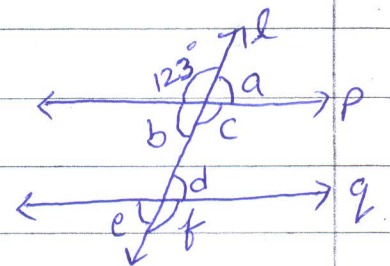


Topic: SUMMER HOLIDAY HOME WORK Date: 2018-19

- Q.1. In the given fig. identify if  $l \parallel m$
- the pairs of alternate interior angles
  - the pairs of corresponding angles
  - the pairs of interior angles on the same side of the transversal.
  - the vertically opposite angles.



- Q.2. In the adjoining figure,  $P \parallel Q$ , find the unknown angles.



Q.3. Solve the Equation:-

a)  $0 = 16 + 8(x - 9)$

b)  $32 = 8 + 6(x + 4)$

Q.4. The sum of three times of a number and 14 is 35. Find the number.

Q.5. Sale of English and Hindi books in the years 1995 to 1999 are given below:-

Years	1995	1996	1997	1998	1999
ENG.	350	400	450	620	600
HINDI	500	525	600	650	700

Draw a double bar graph.

Q.6. Find the mean, mode, median and Range of the data:-

38, 42, 35, 50, 45, 52, 58, 45, 60, 45, 59

Q.7. In a cricket match, a batswoman hits a boundary 6 times out of 30 balls she plays. Find the probability that she did not hit a boundary.

Q.8. A car covers a distance of 89.1 Km in 2.2 hours. What is the average distance covered by it in 1 hour?

Q.9. Find :-

a)  $101.01 \times 0.01$

c)  $6\frac{2}{5} \times \frac{7}{9}$

b)  $76.5 \div 0.15$

d)  $3\frac{1}{2} + 4\frac{3}{4}$

Q.10. Find the product, using suitable properties:-

a)  $(-27) \times (-29) + 27$

b)  $958 \times (-35) + (-958) \times 65$

c)  $1001 \times 25$

Q.11. Verify  $x - (-y) = x + y$  for the following values of  $x$  and  $y$ :-

i)  $x = 59$ ,  $y = -35$

ii)  $x = -31$ ,  $y = -29$

Q.12. Verify :-

$$28 \times [8 + (-9)] = [28 \times 8] + [28 \times (-9)]$$

Q.13. Activity :- To compare the marks obtained in all the subjects by a student in the Ist and IInd term Exam by drawing a bar graph using paper cutting and pasting on A3 size sheet.

NOTE :- \* Revise full syllabus done in Class for test.

\* H.H.W. will be checked only on 2nd, 3rd and 4<sup>th</sup> July 18.

Ankit